

Reproduced by permission of Ordnance Survey on behalf of HMSO. Crown copyright and database right 2013. All rights reserved. Ordnance Survey Licence number: 100048446

SIGNIFICANT RESIDUAL RISKS

The following list provides a cross reference between this drawing and the Designer's Health & Safety Risk Assessment and identifies those areas of Significant Residual Risk

Description of Risk	Ref. No.
Working close to live traffic and pedestrians	1
Excavation near existing stas	2
Pavement materials in relation to COSSH	3

- Key:
- Bespoke granite paving
 - Granite setts paving
 - Bespoke granite wall
 - Bespoke granite steps
 - Bespoke granite seating
 - Granite bespoke level paving
 - Bespoke granite slope feature flush to 300mm
 - Bespoke concrete retaining wall
 - Bespoke concrete paving ramp
 - Bespoke concrete amphitheatre steps
 - 40mm inlay resurfacing
 - Blacktop carriageway table and central island
 - Blacktop carriageway ramp
 - Existing footway paving material to be reused
 - Footway surfacing construction
 - Tactile paving
 - Landscaping areas
 - Bespoke lighting feature
 - Lemoore Setts Paving
 - Bespoke Lemoore paving
 - Lemoore paving
 - Existing car park to be re-marked
 - Full depth carriageway construction
 - Self binding gravel
 - Brick retaining wall
 - Bespoke basalt kerb canal edge 800mm wide
 - Tree
 - Existing tree to be retained
 - Existing tree to be removed
 - Clipped hedge

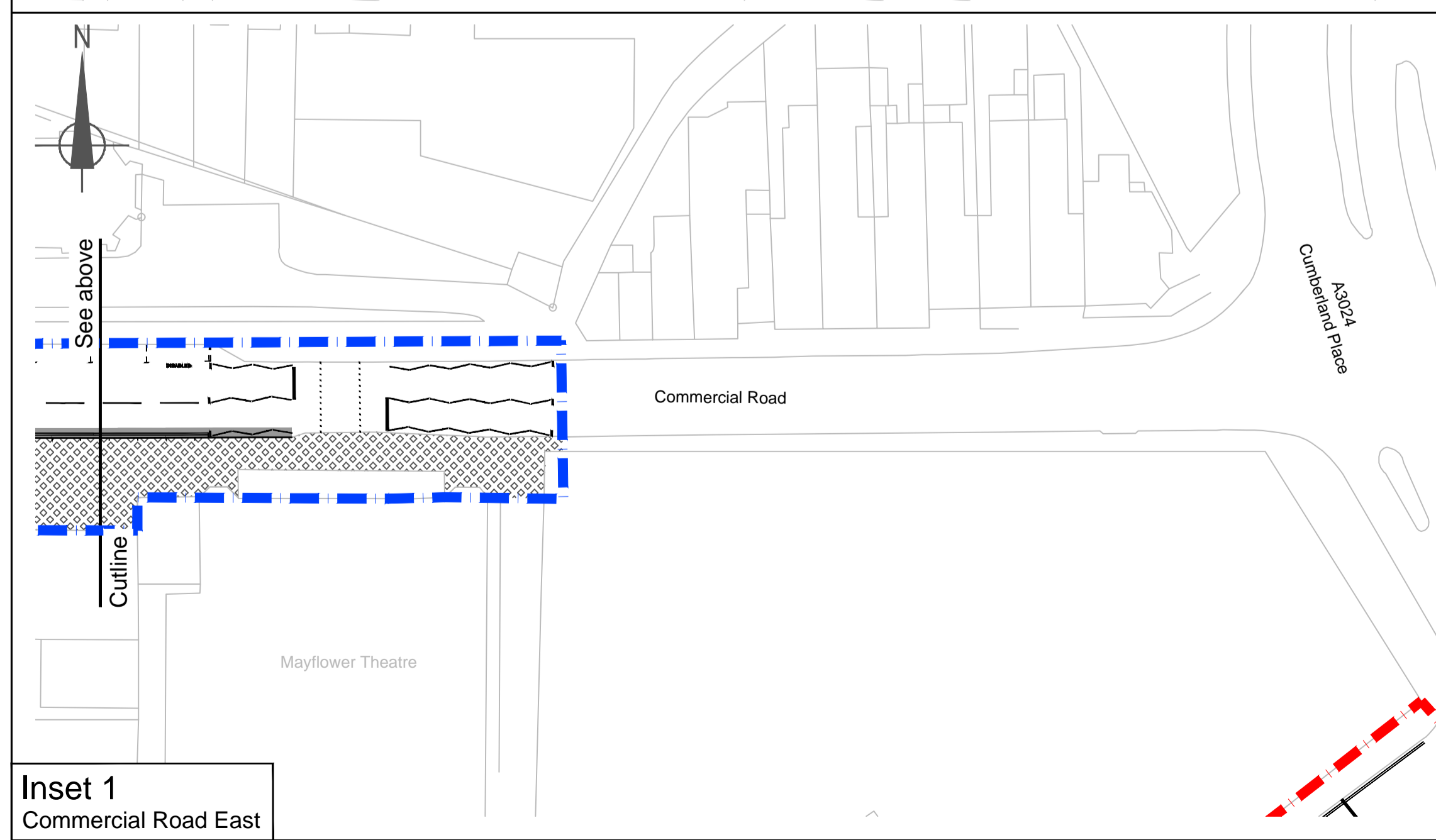
Key:

- Phase 1 construction works
- Phase Station Forecourt construction works
- Phase 2 construction works
- Phase 3 construction works
- Phase 4 construction works
- Phase 5a construction works 'work in progress - final layout under negotiation'

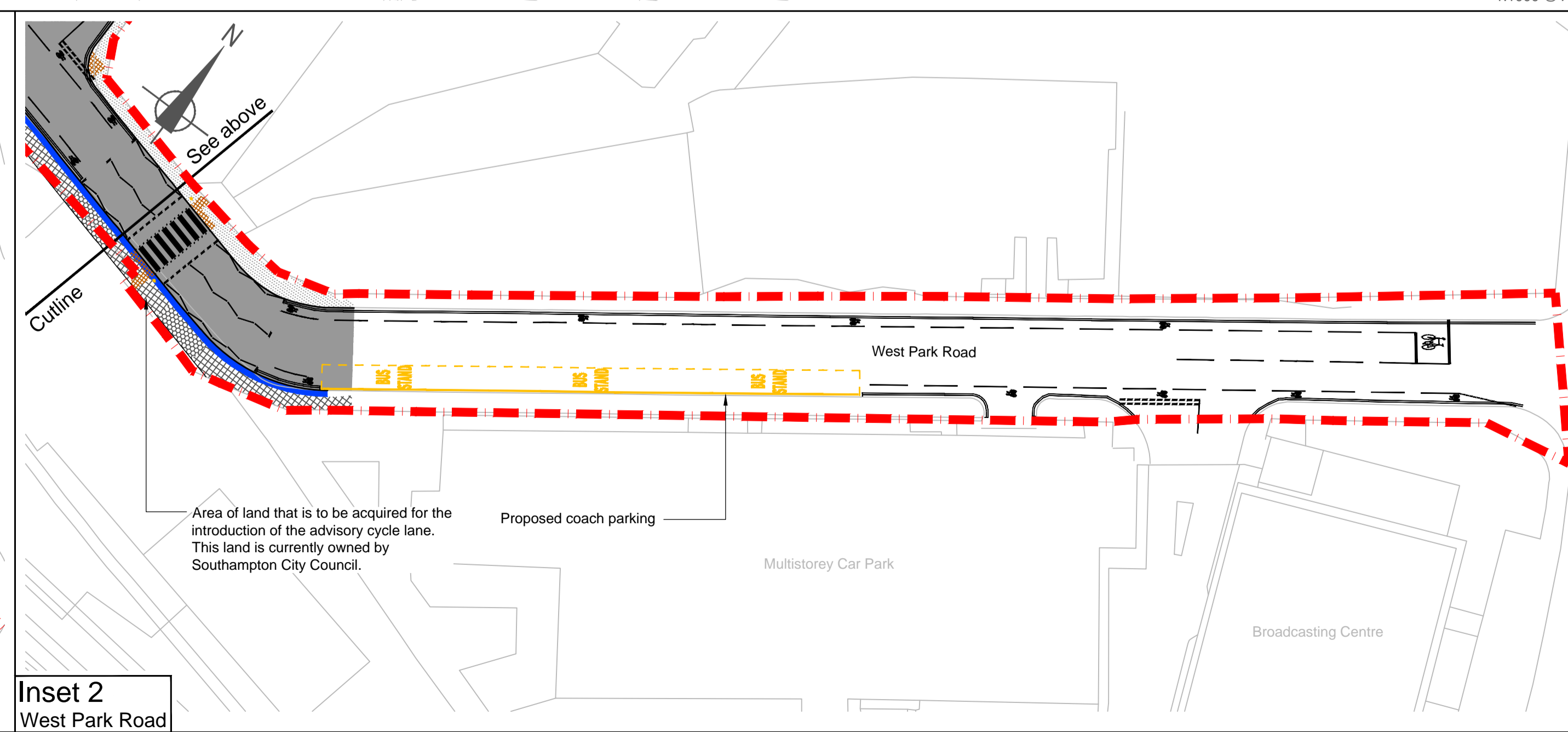
0 10 20 30 40 50

1:500 @ A1
1:1000 @ A3

Rev	By	Chkd	Apprvd	Date	Description
P0	REA	PMN	CW	24-06-13	For information only



Inset 1
Commercial Road East



Inset 2
West Park Road

Balfour Beatty
Living Places

Halcrow Group Limited
Elms House, 43 Brook Green, London, W6 7EF
Tel +44 (0)20 3479 8000 Fax +44 (0)20 3479 8001
www.halcrow.com

Halcrow
A CH2M HILL COMPANY

Project
Southampton Station Quarter

Drawing
Phasing of Construction Works Including Overline House Phases 1 to 5

Drawn by: REA Date: 24-06-13
Checked by: PMN Date: 24-06-13
Approved by: CW Date: 24-06-13

Drawing No. 201015-BE-000-033 Revision P0

Drawing Scale: as shown @ A1